




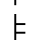





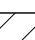





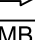
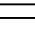
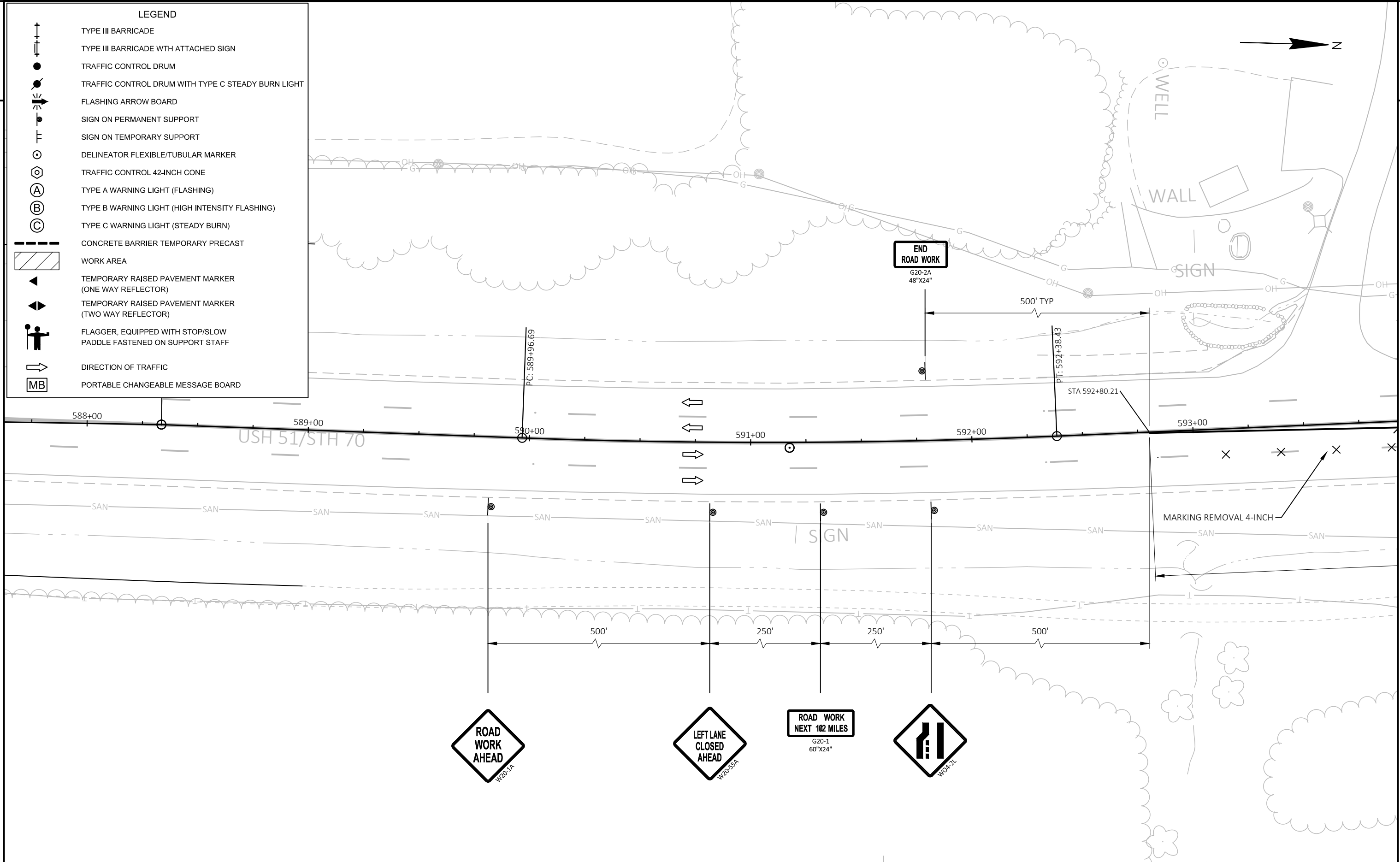
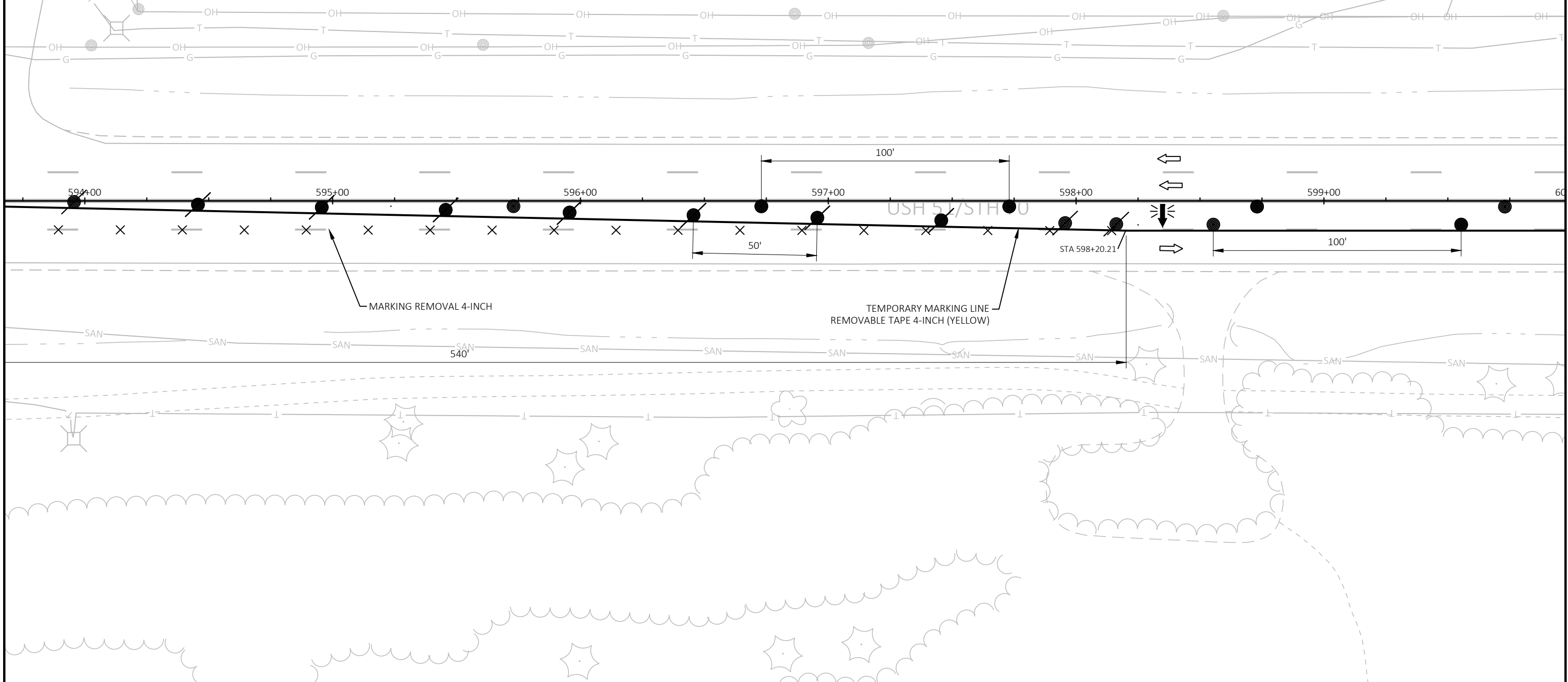


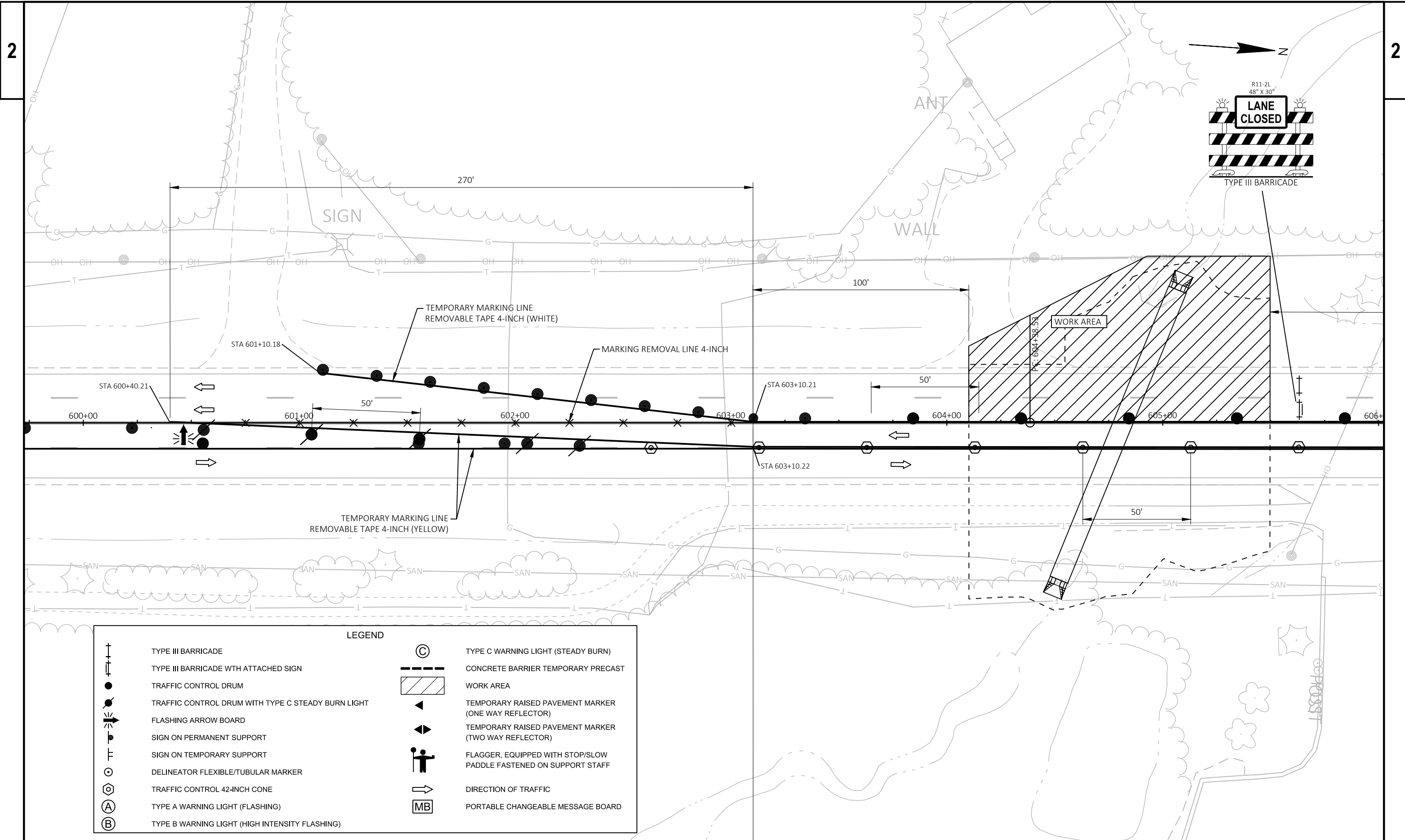
LEGEND

-  TYPE III BARRICADE
-  TYPE III BARRICADE WITH ATTACHED SIGN
-  TRAFFIC CONTROL DRUM
-  TRAFFIC CONTROL DRUM WITH TYPE C STEADY BURN LIGHT
-  FLASHING ARROW BOARD
-  SIGN ON PERMANENT SUPPORT
-  SIGN ON TEMPORARY SUPPORT
-  DELINEATOR FLEXIBLE/TUBULAR MARKER
-  TRAFFIC CONTROL 42-INCH CONE
-  TYPE A WARNING LIGHT (FLASHING)
-  TYPE B WARNING LIGHT (HIGH INTENSITY FLASHING)
-  TYPE C WARNING LIGHT (STEADY BURN)
-  CONCRETE BARRIER TEMPORARY PRECAST
-  WORK AREA
-  TEMPORARY RAISED PAVEMENT MARKER (ONE WAY REFLECTOR)
-  TEMPORARY RAISED PAVEMENT MARKER (TWO WAY REFLECTOR)
-  FLAGGER, EQUIPPED WITH STOP/SLOW PADDLE FASTENED ON SUPPORT STAFF
-  DIRECTION OF TRAFFIC
-  PORTABLE CHANGEABLE MESSAGE BOARD



LEGEND	
	TYPE III BARRICADE
	TYPE III BARRICADE WITH ATTACHED SIGN
	TRAFFIC CONTROL DRUM
	TRAFFIC CONTROL DRUM WITH TYPE C STEADY BURN LIGHT
	FLASHING ARROW BOARD
	SIGN ON PERMANENT SUPPORT
	SIGN ON TEMPORARY SUPPORT
	DELINEATOR FLEXIBLE/TUBULAR MARKER
	TRAFFIC CONTROL 42-INCH CONE
	TYPE A WARNING LIGHT (FLASHING)
	TYPE B WARNING LIGHT (HIGH INTENSITY FLASHING)
	TYPE C WARNING LIGHT (STEADY BURN)
	CONCRETE BARRIER TEMPORARY PRECAST
	WORK AREA
	TEMPORARY RAISED PAVEMENT MARKER (ONE WAY REFLECTOR)
	TEMPORARY RAISED PAVEMENT MARKER (TWO WAY REFLECTOR)
	FLAGGER, EQUIPPED WITH STOP/SLOW PADDLE FASTENED ON SUPPORT STAFF
	DIRECTION OF TRAFFIC
	PORTABLE CHANGEABLE MESSAGE BOARD





LEGEND	
	TYPE III BARRICADE
	TYPE III BARRICADE WITH ATTACHED SIGN
	TRAFFIC CONTROL DRUM
	TRAFFIC CONTROL DRUM WITH TYPE C STEADY BURN LIGHT
	FLASHING ARROW BOARD
	SIGN ON PERMANENT SUPPORT
	SIGN ON TEMPORARY SUPPORT
	DELINEATOR FLEXIBLE/TUBULAR MARKER
	TRAFFIC CONTROL 42-INCH CONE
	TYPE A WARNING LIGHT (FLASHING)
	TYPE B WARNING LIGHT (HIGH INTENSITY FLASHING)
	TYPE C WARNING LIGHT (STEADY BURN)
	CONCRETE BARRIER TEMPORARY PRECAST
	WORK AREA
	TEMPORARY RAISED PAVEMENT MARKER (ONE WAY REFLECTOR)
	TEMPORARY RAISED PAVEMENT MARKER (TWO WAY REFLECTOR)
	FLAGGER, EQUIPPED WITH STOP/SLOW PADDLE FASTENED ON SUPPORT STAFF
	DIRECTION OF TRAFFIC
	PORTABLE CHANGEABLE MESSAGE BOARD

PROJECT NO: 1170-19-70

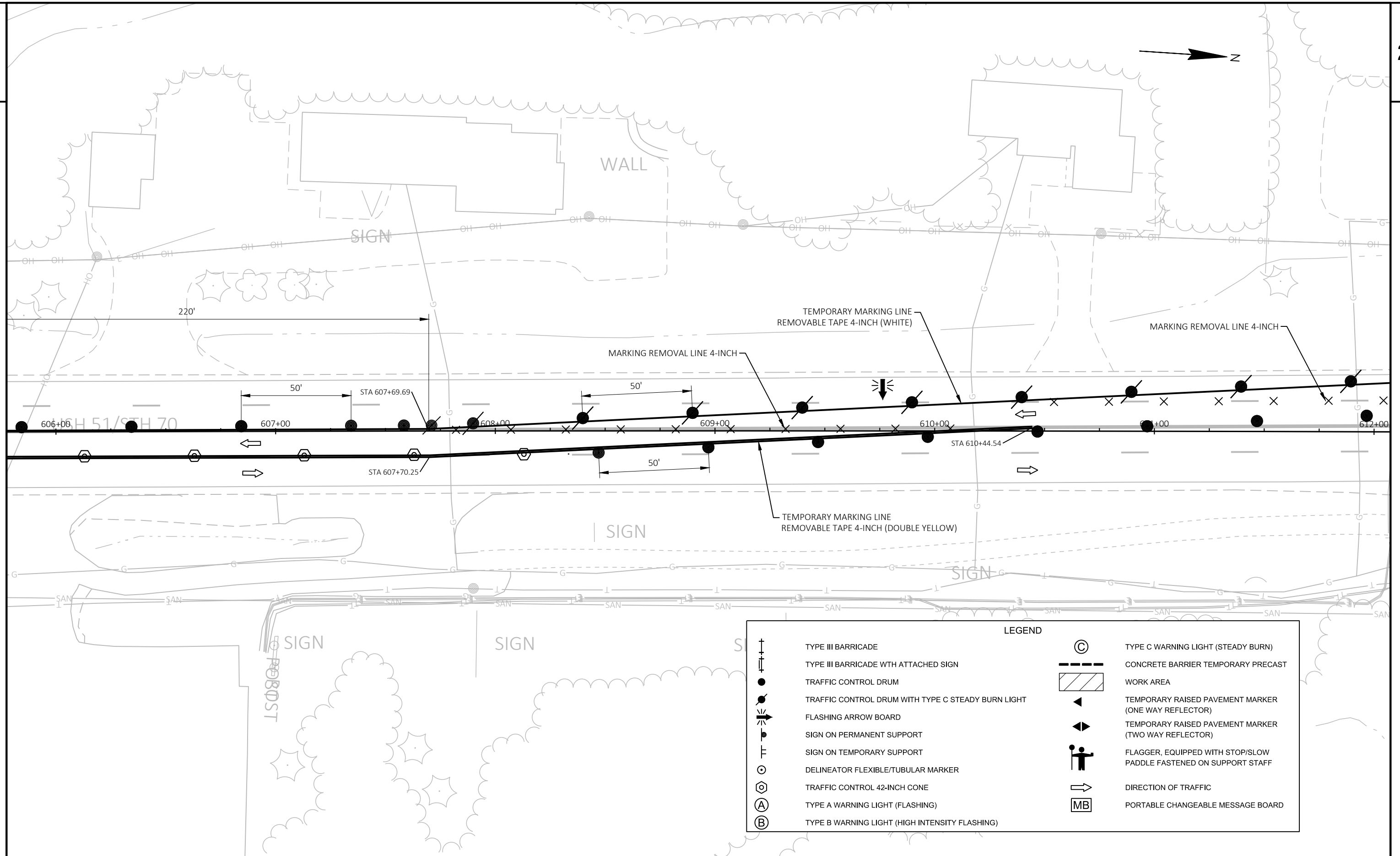
HWY: USH 51

COUNTY: VILAS

TRAFFIC CONTROL STAGE 1

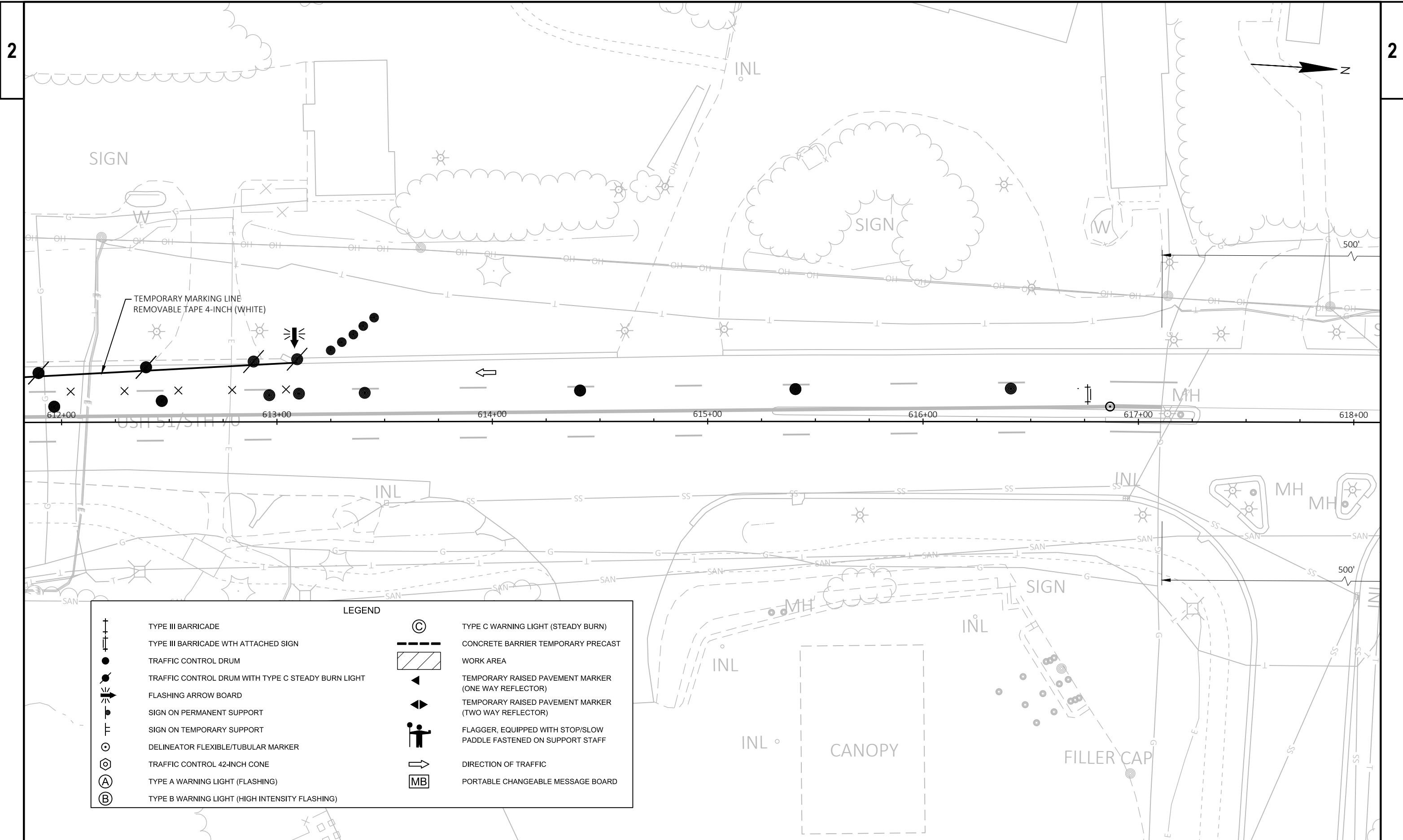
SHEET

E



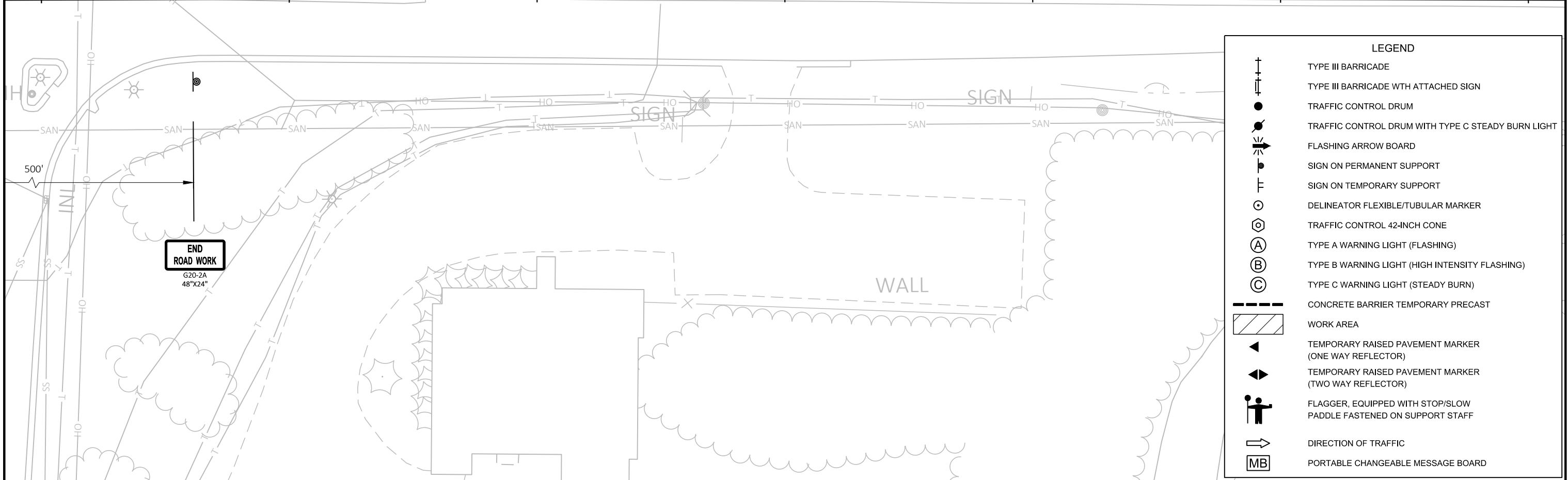
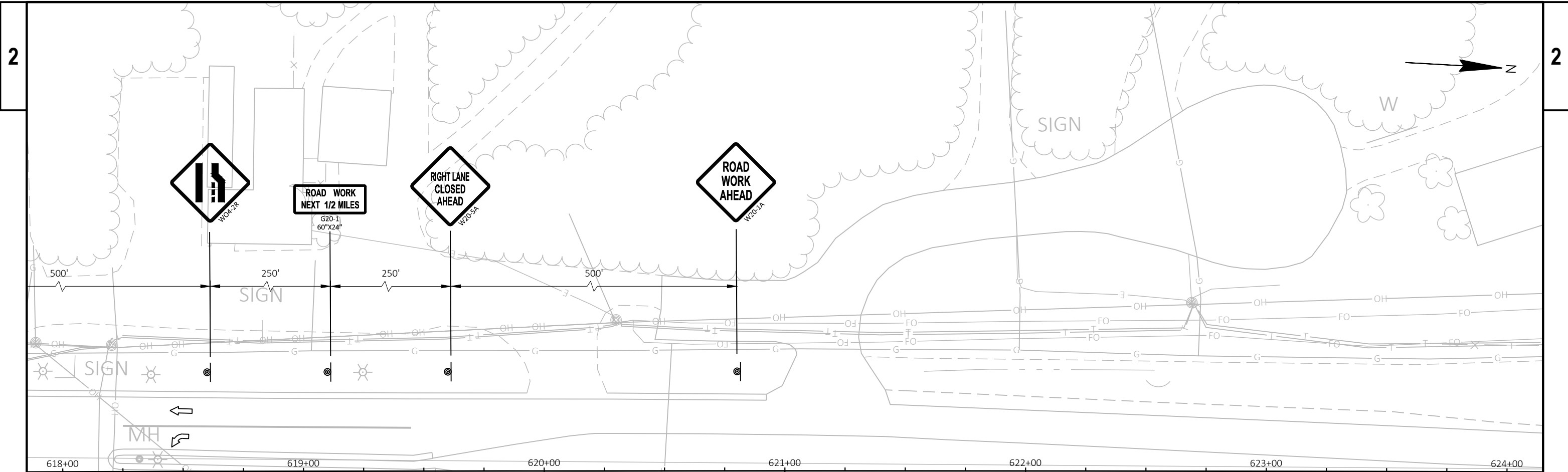
LEGEND

⊕	TYPE III BARRICADE	Ⓢ	TYPE C WARNING LIGHT (STEADY BURN)
⊕	TYPE III BARRICADE WITH ATTACHED SIGN	▨	CONCRETE BARRIER TEMPORARY PRECAST
●	TRAFFIC CONTROL DRUM	▨	WORK AREA
●	TRAFFIC CONTROL DRUM WITH TYPE C STEADY BURN LIGHT	◀	TEMPORARY RAISED PAVEMENT MARKER (ONE WAY REFLECTOR)
↔	FLASHING ARROW BOARD	◀▶	TEMPORARY RAISED PAVEMENT MARKER (TWO WAY REFLECTOR)
⊕	SIGN ON PERMANENT SUPPORT	🚧	FLAGGER, EQUIPPED WITH STOP/SLOW PADDLE FASTENED ON SUPPORT STAFF
⊕	SIGN ON TEMPORARY SUPPORT	➡	DIRECTION OF TRAFFIC
⊕	DELINEATOR FLEXIBLE/TUBULAR MARKER	MB	PORTABLE CHANGEABLE MESSAGE BOARD
⊕	TRAFFIC CONTROL 42-INCH CONE		
Ⓐ	TYPE A WARNING LIGHT (FLASHING)		
Ⓑ	TYPE B WARNING LIGHT (HIGH INTENSITY FLASHING)		



LEGEND	
	TYPE III BARRICADE
	TYPE III BARRICADE WITH ATTACHED SIGN
	TRAFFIC CONTROL DRUM
	TRAFFIC CONTROL DRUM WITH TYPE C STEADY BURN LIGHT
	FLASHING ARROW BOARD
	SIGN ON PERMANENT SUPPORT
	SIGN ON TEMPORARY SUPPORT
	DELINEATOR FLEXIBLE/TUBULAR MARKER
	TRAFFIC CONTROL 42-INCH CONE
	TYPE A WARNING LIGHT (FLASHING)
	TYPE B WARNING LIGHT (HIGH INTENSITY FLASHING)
	TYPE C WARNING LIGHT (STEADY BURN)
	CONCRETE BARRIER TEMPORARY PRECAST
	WORK AREA
	TEMPORARY RAISED PAVEMENT MARKER (ONE WAY REFLECTOR)
	TEMPORARY RAISED PAVEMENT MARKER (TWO WAY REFLECTOR)
	FLAGGER, EQUIPPED WITH STOP/SLOW PADDLE FASTENED ON SUPPORT STAFF
	DIRECTION OF TRAFFIC
	PORTABLE CHANGEABLE MESSAGE BOARD

PROJECT NO: 1170-19-70 HWY: USH 51 COUNTY: VILAS TRAFFIC CONTROL STAGE 1 SHEET E



LEGEND	
	TYPE III BARRICADE
	TYPE III BARRICADE WITH ATTACHED SIGN
	TRAFFIC CONTROL DRUM
	TRAFFIC CONTROL DRUM WITH TYPE C STEADY BURN LIGHT
	FLASHING ARROW BOARD
	SIGN ON PERMANENT SUPPORT
	SIGN ON TEMPORARY SUPPORT
	DELINEATOR FLEXIBLE/TUBULAR MARKER
	TRAFFIC CONTROL 42-INCH CONE
	TYPE A WARNING LIGHT (FLASHING)
	TYPE B WARNING LIGHT (HIGH INTENSITY FLASHING)
	TYPE C WARNING LIGHT (STEADY BURN)
	CONCRETE BARRIER TEMPORARY PRECAST
	WORK AREA
	TEMPORARY RAISED PAVEMENT MARKER (ONE WAY REFLECTOR)
	TEMPORARY RAISED PAVEMENT MARKER (TWO WAY REFLECTOR)
	FLAGGER, EQUIPPED WITH STOP/SLOW PADDLE FASTENED ON SUPPORT STAFF
	DIRECTION OF TRAFFIC
	PORTABLE CHANGEABLE MESSAGE BOARD

PROJECT NO: 1170-19-70 HWY: USH 51 COUNTY: VILAS TRAFFIC CONTROL STAGE 1 SHEET E