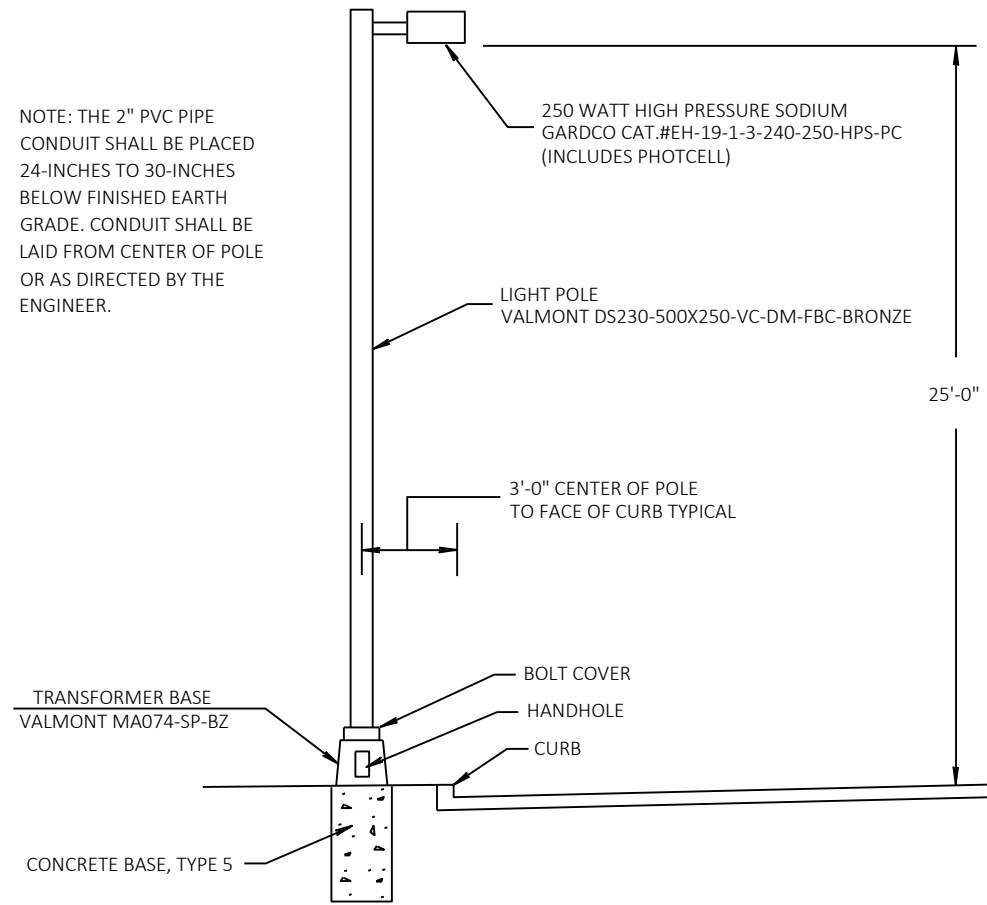
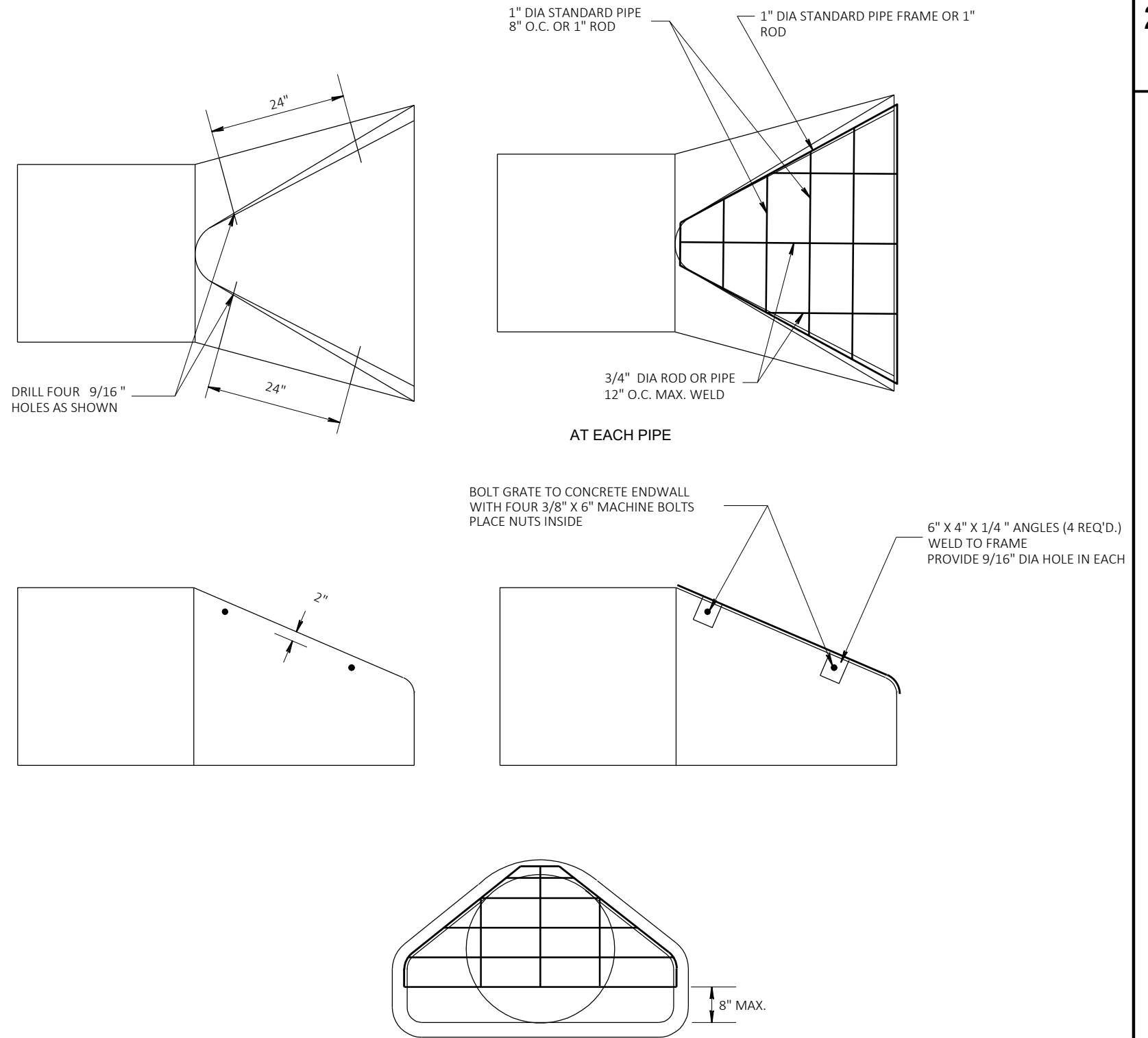


NOTE: THE 2" PVC PIPE CONDUIT SHALL BE PLACED 24-INCHES TO 30-INCHES BELOW FINISHED EARTH GRADE. CONDUIT SHALL BE LAID FROM CENTER OF POLE OR AS DIRECTED BY THE ENGINEER.



LIGHT POLE DETAIL



PIPE GRATE DETAIL